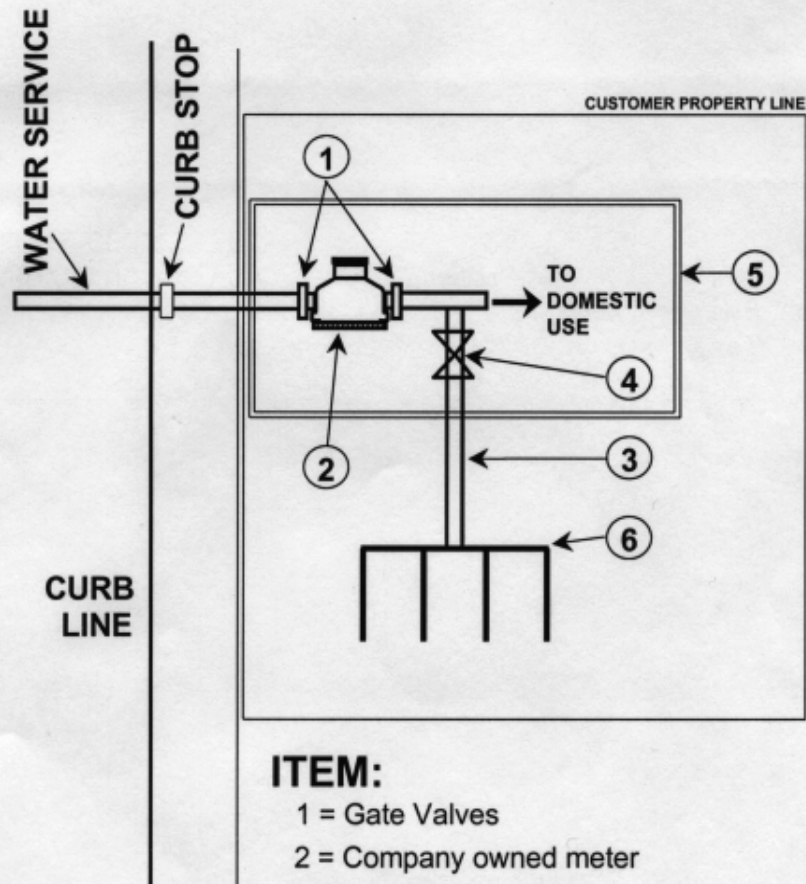


PSC No. 2 – Water
UNITED WATER WESTCHESTER INC.
Initial Effective Date: December 5, 2014

Leaf No. 101
Revision: 0
Superseding Revision:

GENERAL INFORMATION

SERVICE CLASSIFICATION NO. 1 (Continued)



ITEM:

- 1 = Gate Valves
- 2 = Company owned meter
- 3 = Sprinkler service line
- 4 = Double check valve
with test ports
- 5 = Customer premise/building
- 6 = Underground lawn
sprinkler system

Drawing not to scale